

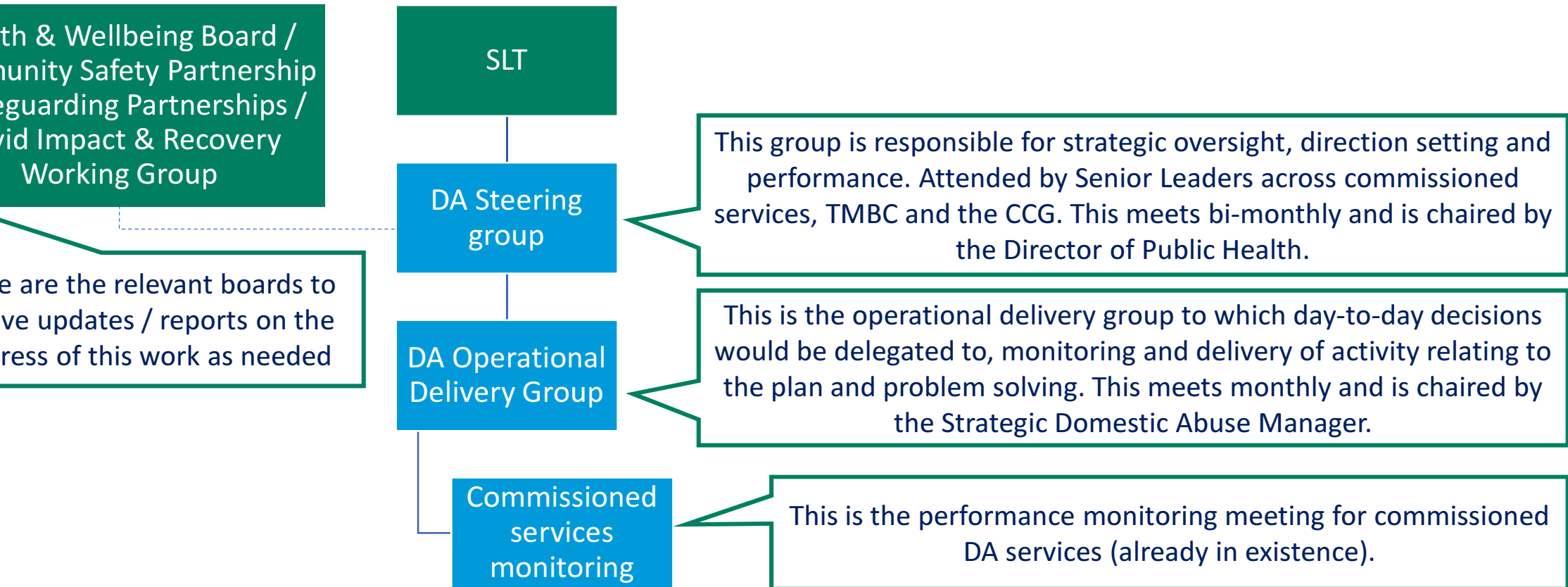
Domestic abuse in Tameside

Health and Wellbeing Board
January 2021

Introduction

Roles and responsibilities

Domestic Abuse Officer Governance | Strategic oversight and operational expertise



Background

Services and support in
Tameside

Background | Services and interventions relating to domestic abuse in Tameside

Our response to domestic abuse can be split into operational safeguarding risk management/interventions and specific targeted work.

The operational risk management processes are multi-agency, and work to ensure that victims and their children are kept safe. This includes GMP, children's social care, Bridges, probation, substance misuse, education, mental health, GPs, midwifery, nursing, adult social care, homelessness services etc. These interventions or processes include MARAC, MASH and Operation Encompass.

The majority of the specific and targeted support that victims receive in Tameside are provided after an assessment of their needs and risk level through the operational processes described above. However, self-referrals are also possible to some of these services. Victims of abuse and their children access domestic abuse provision in Tameside through Bridges, our core commissioned service. There are community based organisations that also work with victims of domestic abuse such as Diversity Matters NW and also GM-wide organisations and initiatives such as Strive which is run by Victim Support.

Bridges | Commissioned provision in Tameside

Bridges is our core commissioned service to respond to domestic abuse. It is part of Jigsaw, which is a social housing provider in Tameside.

Depending on risk of the domestic abuse, there are different services that can be available. The risk levels are categorised as standard risk, medium risk and high risk. The Bridges service works across all risk levels but the most intensive work is done with those at high risk.

	Service/Intervention	Risk level
Adults	IDVA	High
	Refuge	High
	Strive	Standard
	Freedom Programme	All
	Outreach	Medium
CYP	CHIDVA	All
	Time to talk	All

Performance

DA in Tameside | What we know

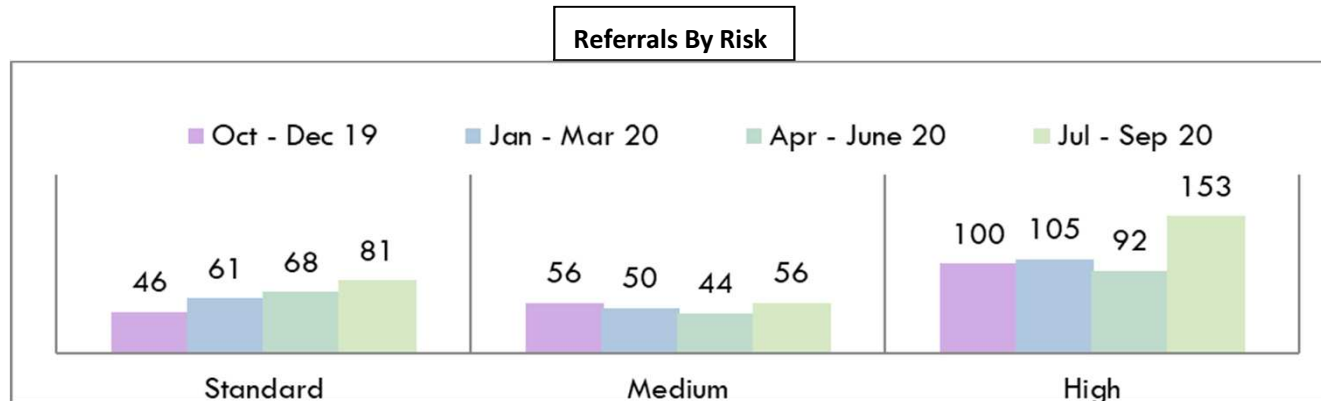
2019 Peer review

1. Improve **prevention** of domestic abuse
2. There is a gap in **recovery support** for victims/survivors
3. The current approach is not **holding perpetrators to account**
4. We need to support a **co-ordinated community response**



- **Covid-19** disruption
- Increase in high-risk cases heard at **MARAC**
- **Additional IDVA capacity required** to meet demand
- **Challenging financial landscape**
- **Increased demand for services**
- **DA Bill** requirements

DA in Tameside | Q2 Performance for Bridges



- There has been **a 40% increase in referrals into the service from the previous quarter**
- The majority of service users are female but there was an increase in male victims of abuse in Q2
- **Between April and September 2020 Bridges IDVAs dealt with 233 high risk DV referrals.** These are victims who have been identified as being at high risk of domestic homicide or serious harm. Compared to the same period last year – 139 represents a 68% increase.
- For children, issues such as **increased aggression, low self-esteem, and behavioural responses both in school and at home are common** features.

Challenges at the moment | Current risks

Key pressures across services:

- **Covid-19 additional spend** creating cost pressures
- **Maintaining staff cover** can be challenging when staff are told to isolate or are off sick
- The **intensity of caseloads** for those supporting domestic abuse victims is hard on staff and could lead to burnout
- **Delivering services virtually is not always as safe** as a perpetrator can be in the home but just out of sight
- The **CHIDVA waiting list is high** with many young people requiring support but delivering support challenging outside of school settings

Priorities for the year ahead

Key Priorities for 2021

- The **cost of domestic abuse in Tameside** – analysis of spend and demand
- **Needs assessment** including getting a better understanding of needs around housing, health, children and young people, victim-survivor needs, minority victims (Elderly/BME/LGBT/Male/Disability), perpetrators (including children that abuse parents), criminal justice and the community
- **Victim-survivor consultation**
- **New Domestic Abuse Strategy (2021 – 2024)**
- **DA Bill** capacity building and implementation of new statutory duties

DA Bill | New duties for local authorities

Among other things such as the Victims Charter and reforms to Family Court, it includes new statutory duties for local authorities.

The biggest change is that councils in England **must commission additional vital support for those victims of domestic abuse and their children who might currently be turned away from refuges and other safe accommodation because their needs cannot be met.**

The DA Bill also will result in these new duties/requirements:

- A statutory **needs assessment** for each Tier 1 authority
- A statutory **local domestic abuse strategy**
- Each Tier 1 authority must have a **DA Partnership board**
- Authorities will be required to **commission support in safe accommodation** to meet the diverse needs of all victims and their children in or coming into their area
- Give **priority housing to homeless victims of domestic abuse.**

DA Bill | What next?

- The new duties are expected to come into force in April 2021.
- We need to have shown significant progress that we can meet the requirements of the bill by April including a plan to demonstrate how we are going to meet the new obligations if we are not already.
- There is a raft of activity that will need to be done, across the council including a needs assessment, commissioning review and new strategy.
- Activity is already underway to ensure we are in a good position by Spring 2021.

Questions